

Delivering on a Promise to Voters: KCLS Capital Improvement Plan 11 Year Report • September 2015



Table of Contents

Director's Letter	2
Financial Summary	3
The Standard for KCLS Libraries: Green	3
Building Awards	4
KCLS Art.	6

New Libraries

Black Diamond Library	8
Burien Library	9
Carnation Library	10
Duvall Library	11
Fall City Library	12
Federal Way 320 th Library	13
Greenbridge Library	14
Kenmore Library	15
Lake Hills Library	16
Muckleshoot Library	17
Newcastle Library	18
Sammamish Library	19
Snoqualmie Library	20

Outreach Vehicles

Library2Go!	21
-------------------	----

Expanded Libraries

Auburn Library	22
Bellevue Library Parking	23
Covington Library	24
Fairwood Library	25
Federal Way Library	26
Kirkland Library	27
Lake Forest Park Library	28
Library Connection @ Southcenter	29
Newport Way Library	30
Shoreline Library Parking	31
Skykomish Library	31
Vashon Library	32
Woodmont Library	33

Renovated Libraries

Algona-Pacific Library	34
Bothell Library	34
Library Connection @ Crossroads	34
Des Moines Library	35
Issaquah Library	35
Kent Library	35
Maple Valley Library	35
North Bend Library	36
Redmond Library	36
Richmond Beach Library	36
Woodinville Library	36

In Progress

East Hill of Kent Library	37
Kingsgate Library	37
Mercer Island Library	37
Skyway Library	37
Tukwila Library	38
Valley View Library	38
White Center Library	38

Future Projects

Boulevard Park Library	39
------------------------------	----

Connect with us



Your Investment. Your Library. Your Community.

Eleven years ago, the King County Library System (KCLS) embarked on an ambitious, long-term and patron-oriented building program that has propelled it to one of the busiest and most remarkable library systems in the country. The 13 new libraries, 11 expanded libraries, 11 renovations and two parking-expansion projects plus other enhancements are the hallmarks of a \$172 million Capital Bond approved by King County voters in 2004.

Through these projects, KCLS has grown dramatically, from 550,000 to 753,356 total square feet of interior space in the system's 48 community libraries. In all, 37 projects have been completed to date, yet there is more to come, with three new libraries and three more renovated libraries underway.

Since KCLS' last report in September 2014, there have been many highlights. The Fairwood Library was expanded by 5,000 square feet, bringing it to a total of 20,000 square feet. The long-awaited opening celebration in December 2014 drew an enthusiastic crowd of more than 500 people.

In March 2015, KCLS broke ground on one of the last new libraries being built under the Capital Bond Program – White Center. The 10,000 square-foot library will offer more space, materials and computers. Designed with energy efficiencies in mind, it will also be aesthetically pleasing, featuring skylights, ground-to-floor windows, and serene views of a new garden and groves of old trees saved during construction.

Construction on two other new libraries, Skyway (8,000 square feet) and Tukwila (10,000 square feet), is progressing. Both will include more materials, computers, space for children and teens and community meeting room space. The Tukwila "Community Mosaic" area, funded by the KCLS Foundation, will provide a welcoming environment and gathering space for Tukwila's growing population.

Meanwhile, the Kingsgate Library is undergoing a significant remodel eagerly anticipated by the community. Also in progress are maintenance and materials upgrades for Valley View, and enhancements for Mercer Island. Libraries at Boulevard Park and East Hill of Kent are on the horizon.

The Renton Library (downtown) re-opened in August 2015. Although the newly renovated library was not part of the bond program, it incorporated the same KCLS commitment to providing state-of-the-art, tech-savvy, eco-friendly yet cost-effective libraries that will serve current and future generations of King County residents. KCLS worked with the City of Renton and its citizens to retain the library's unique siting across the Cedar River. Patrons not only are surrounded by more books, resources and high-tech upgrades, but by a newly landscaped park and restful natural surroundings. Another library not funded by the Capital Bond, Renton Highlands, is expected to open in late 2015.

Strong, sustained community support has ensured that the future of libraries in King County is secure and bright. Solid financial planning, great architects and professional construction management – all closely monitored by the KCLS Board of Trustees – has led to inviting civic amenities where all can learn, and by which the King County Library System has kept its promise to voters. KCLS sincerely hopes every community is proud of its new, expanded or renovated KCLS libraries. The projects are all part of our 73-year tradition of ensuring that libraries remain cherished hubs for gathering, learning and pursuing individual and community dreams.



Gary Wasdin

A handwritten signature in black ink, appearing to read "Gary Wasdin".

KCLS Director



Financial Summary

The voters approved a \$172 million bond issue to support the Capital Plan in 2004. As of June 2015, KCLS has spent \$171.2 million of the bond funding. KCLS anticipates being able to complete all of the projects in the Capital Plan with the remaining funds available.



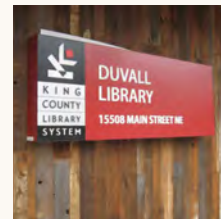
The Standard for KCLS Libraries: Green

The King County Library System (KCLS) has taken steps to ensure that “green,” eco-friendly standards are followed when new libraries are built and existing libraries renovated. Although KCLS is not required to adhere to official green-building standards, an environmentally friendly building approach is nonetheless a priority. KCLS’ goal is to build according to green principles to the greatest extent possible, while being fiscally responsible. Building green, considered a forward-thinking practice, means designing and constructing facilities to reduce negative impacts on outside and indoor environments, creating a net positive for built spaces and society as a whole. There are five areas targeted by green-building standards: Site planning; water conservation; energy savings; recycled materials, and the air quality of the interior environment. KCLS libraries are built to the widely respected Leadership in Energy and Environmental Design (LEED) standards, ensuring the facilities adhere to acceptable and responsible green guidelines. Green-building design and construction has become more sophisticated over the years, and KCLS has been able to implement many eco-friendly features while still holding to its policy of fiscal responsibility.

Building Green from the Start

From the beginning of the planning and site-design process for each new or renovated library, KCLS adheres to green practices. The System’s site-selection policy requires new facilities to be built in populated and highly visible locations. New buildings also are sited to take advantage of natural lighting. LEED-certified architects are hired, and contractors are encouraged to use recycled materials to help conserve natural resources. Many green-building materials and furnishings are cost-effective, as they last longer and result in lower utility costs. Those used in KCLS libraries include:

- Energy-efficient compact fluorescent lights, which use less electricity for the same level of illumination as incandescent lights.
- Paint, adhesives and sealants with low levels of Volatile Organic Compounds (VOCs), to improve the air quality inside libraries.
- Furniture, including workstations, produced with recycled materials.
- Modular carpeting, which does not contain Polyvinyl Chloride (PVCs) and is produced by a company that collects their used carpeting to be restored and resold.
- Low-flow fixtures for toilets, sinks and showers to conserve water.



Rain Gardens

Several KCLS libraries also feature rain gardens as part of their site design: Fairwood, Federal Way, Sammamish, Kenmore, Auburn, and Federal Way 320th libraries. A rain garden consists of native trees, shrubs and grasses planted in compost-amended soil in a shallow depression. Pipes help redirect water from rooftops, driveways and other hard surfaces into the rain garden before it can enter local waterways. Rain gardens help reduce pollution, flooding and provide habitat for wildlife.

Green Projects

Although it is too costly to LEED-certify all projects, two libraries have received LEED-Certified distinctions, with others incorporating many LEED and/or green features.

- The Duvall Library, completed in 2012, became the latest KCLS library to become LEED-Certified, receiving a Silver rating in March 2015. The Duvall Library's distinctive green features include a green roof and a ground-source heat pump, which uses the earth's relatively constant temperature to provide heating, cooling and hot water. This will reduce energy usage by about 26 percent.
- The Burien Library, completed in 2009, is also LEED-Silver Certified. As a joint development with the city of Burien, the city funded one-third of the cost associated with qualifying for LEED certification, a rigorous process which includes application fees and hiring consultants to develop the required documentation.
- The Fairwood Library, completed in November 2014, met a number of LEED requirements. Interior materials used on the project met LEED requirements for low or no off-gassing and recycled content. The design of the addition utilizes large roof overhangs to help shade the glass walls, reducing solar heat gain and thus demand for cooling in the summer, while allowing winter sunlight to reduce the demand for heating. The new heat-recovery system also will help save energy since it takes heat from the exhausted air of the building and recycles it. This system is 95 percent efficient.
- The Vashon Library, completed in March 2014, features a green roof, which helps keep the building cool in winter and reduces storm-water runoff.
- The Federal Way 320th Library, completed in September 2013, was designed with radiant heating under the floor to more efficiently heat and cool the building.
- The Newcastle Library, completed in December 2012, features a ground-source heat pump and green roof.
- The Sammamish Library, completed in 2010, was designed with green features such as a partial green roof and radiant heating.

Building Awards

The new library buildings are winners of local and national awards. KCLS has been recognized by the contracting and architectural communities for the quality of the new and expanded libraries. The following are the awards that were received during the first ten years of the building program:



U.S. Green Building Council, 2015 LEED Silver Certification • Duvall Library

American Institute of Architects, Washington Council's 2015 Civic Design Merit Award • Duvall Library

American Institute of Architects, Washington Council's 2015 Civic Design Merit Award • Federal Way 320th Library

AIA Washington Council, 2014 Civic Design Award • Bellevue Library Parking Garage

Illuminating Engineering Society, 2014 Regional Award of Merit • Newcastle Library

GE Edison, 2014 Award for Environmental Design • Newcastle Library

AIA Washington Council, 2013 Civic Design Merit Award • Newcastle Library

The American Institute of Architects, 2013 Northwest and Pacific Region, Citation Award • Kenmore Library



Duvall Library



Federal Way 320th Library

Building Awards continued

AIA Washington Council, 2012 Civic Design Honor Award • Kenmore Library

AIA Washington Council, 2012 Civic Design Merit Award • Woodmont Library

AIA Washington Council, 2011 Commendation Award • Kenmore Library

AIA Northwest and Pacific Region, 2011 Honor Award • Sammamish Library

Library Journal, 2011 New Landmark Library

Sammamish Library, selected as one of the ten most inspiring and innovative public libraries in the country.

AIA Washington Council, 2011 Civic Design Merit Award • Federal Way Library

AIA Washington Council, 2011 Civic Design "People's Choice Award" • Federal Way Library

U.S. Green Building Council, LEED Gold Certification for New Construction in 2010 • Burien Town Center Project

Puget Sound Regional Council, 2010 Vision 2040 Award • Burien Library

Masonry Institute of Washington, Excellence Award in Masonry Design 2010 • Burien Library

International Association of Lighting Designers Competition 2010,

Edwin F. Guth Award for Interior Lighting • Burien Library

2010 American Institute of Architects Washington Council,

Civic Design Award, Citation Level • Sammamish Library

American Planning Association and Planning Association of Washington, Implementation Category Citation Award 2009 • Burien Town Center Project

Associated General Contractors, 2009 Build Washington Awards,

Public Building under \$5 million • Muckleshoot Library

Associated General Contractors, 2008 Build Washington Awards,

Public Building under \$5 million • Snoqualmie Library

Northwest Construction 2008, Best of Awards, Recognizing Excellence in Best Overall Building for Five Libraries

Black Diamond, Carnation, Fall City, Snoqualmie and Muckleshoot Libraries

Northwest Construction 2008, Best of Awards, Award of Merit • Woodmont Library

AIA Northwest Chapter, Honor Award for Civic Architecture for Five Design-Build Libraries

Black Diamond, Carnation, Fall City, Snoqualmie and Muckleshoot Libraries

KCLS Art

Incorporating art in new and expanded libraries is an important part of the Capital Bond Program. Art chosen for projects is of high quality and reflects the diversity and values of communities KCLS serves. It aims to spur in patrons a sense of intellectual adventure. Library art, much of which is produced by renowned Northwest artists, is selected through an extensive process that includes three open public calls for art, the compilation of a roster of professional artists, and the assistance of an art consultant. Whether paintings, sculptures, murals, mobiles, tiles, interactive or other creative works, the final selections are meant to please patrons of all ages and to increase the enjoyment of any library visit.

KCLS has been pleased with the vision and inventiveness of participating artists, all of whom have created varied, compelling pieces for every new or expanded library. Among the recent additions are:

- The new three-level parking garage at Bellevue Library displays a fitting piece of artwork by Buster Simpson: Vanity license plates displayed on an 18-foot tall, stainless steel-mesh wall. Entitled ***Vernacular***, the unique installation features black and white license plates on the exterior wall and multi-colored license plates on the interior.
- In the Duvall Library, renowned artist John Grade created a dramatic piece from wood and resin, called ***Fold***. The piece, which has become quite popular, received the Portland Art Museum's Contemporary Northwest Art Award.
- In 2014, Ran Hwang created three dynamic pieces for the Federal Way 320th Library, entitled ***Ode to White Sunset***, ***Ode to Red Sunset*** and ***Everything Starts***. The pieces are crafted from thousands of buttons that together create extraordinary landscapes.
- In the Kenmore Library, artist Claude Zervas created a unique under-floor installation he named ***Enceladus***, inspired by artifacts recovered from an ancient shipwreck. Patrons can discover the three parts of the installation as they walk over glass tiles in various areas of the library.
- At the Vashon Library, David Eckard's five-piece ceiling sculpture installation, ***Cumulative Cumulus***, reflects his concept of an "inquiry"/"cloud" and "visual lexicon." He incorporated compass points into each piece to reflect the way a patron could navigate through such library elements as fiction, author, fact, collection and memoir.



Buster Simpson, *Vernacular*.



John Grade, *Fold*.



Ran Hwang, *Everything Starts*.



Claude Zervas, *Enceladus*.



David Eckard, *Cumulative Cumulus*.

New Libraries



Black Diamond Library

The 5,000 square foot Black Diamond Library was completed in May 2008. Funding to build the new library was budgeted prior to the 2004 Capital Bond, although bond funds will pay for ongoing maintenance. The new library was constructed together with four other libraries using the design-build construction process.

When designing the interior of the library, the architects drew from historical guidelines, which reference the late 19th Century vernacular architecture that was prevalent in the city of Black Diamond at the time. Design elements such as the wood structure, proportions, site planning and building cladding reflect the historical guidelines. A warm color palette was used to provide a welcoming interior. Large windows on the south and east sides of the building allow for views of downtown Black Diamond and Mount Rainier, which may be enjoyed from the main reading area in the library.

The library also features two pieces of artwork by Lockwood Dennis, who is known for his vibrant woodblock prints. He agreed to create two larger scale paintings for the new library based explicitly on historic Black Diamond.

The new library includes more materials, computers, space for children and teens and a community meeting room. Six months after the library opened, circulation increased 30 percent and patron visits increased 22 percent when compared to the same six-month period at the former library.

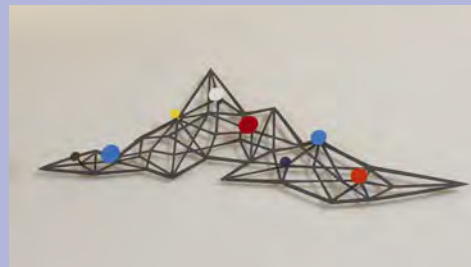
New Library Location: 24707 Roberts Drive

Architect: Miller-Hull Partnership

Contractor: BNBuilders, Inc.



Lockwood Dennis, *Depot*.



Victoria Haven, *Coal Matrix*.

New Libraries



Burien Library

The 32,000 square-foot Burien Library, located at the Burien Town Square development, was completed in June 2009. The \$17.6 million project is a unique collaboration between KCLS and the City of Burien and features a three-story building and parking garage that is shared between the library and city hall. Adjacent to the new library and city hall building is a one-acre park, new condominiums and retail space.

The lobby provides access to several shared areas, including an information center and the council chamber, which also serves as a multipurpose meeting room. The new library includes more computers, space for children and teens and community meeting space. Six months after the library opened, circulation increased 13 percent and patron visits increased 35 percent when compared to the same six-month period at the former library.

The overarching principle guiding the architectural design of the civic building was transparency. This was achieved through incorporating large panes of glass into the building design to create an open and inviting environment. The design also allows for magnificent views of Mount Rainier. The building qualified for Silver Certification through the U.S. Green Building Council's LEED Green Building Rating System and was the first LEED-rated building in the City of Burien.

New Library Location: 400 SW 152nd Street

Architect: Ruffcorn Mott Hinthorne Stine

Contractor: BNBuilders, Inc.

"I waited, along with many others, for the beautiful and very useful addition to our Library System. Great job, I do love it!"

Kathleen Fruge-Brown,
Eagle Landing, located
in the NW Collection.



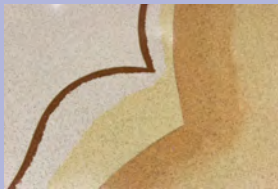
Jeanet Bokhour, *Wind Power, Pancakes, Fish Tank, Ladders and Sunny Day*, located in the Children's Area.



Kathy Bradford, *Atmosphere*, located on the large glass window in the foyer.



Liliana Gelman, *The Library*, located in the quiet study room.



Paul Marioni, terrazzo floor located in the foyer.

New Libraries



Carnation Library

The new 5,000 square-foot Carnation Library was completed in January 2009 at the existing library site. The \$3.7 million library was constructed together with four other libraries as a design-build project. The new library was designed with input from community members, who spoke very strongly about having a place to park bicycles and salvaging artwork. Native American artwork from the former building was installed at the new building. The new library features warm colors on the interior, as well as a large "front porch" area that faces the street, allowing people to sit, gather or park their bicycles.

The library includes a Children's Area, Teen Zone and community meeting room with a sliding door, allowing it to function as part of the larger library when not being used for programs. More than 4,000 new books, magazines, movies and CDs were added to the collection, for a total of more than 25,000 library materials. Six months after the library opened, circulation increased 126 percent and patron visits increased 13 percent when compared to the same six-month period at the former library.

Address of New Library: 4804 Tolt Avenue

Architect: Miller-Hull Partnership

Contractor: BNBuilders, Inc.

"Thank you KCLS for bringing this great facility here. This is a great place to live and raise a family and we will enjoy the library for years to come," said Carnation Mayor Mike Flowers at the opening celebration.



Peter Reiquam, Table, Lamp.

New Libraries



John Grade, *Fold*.

Duvall Library

Construction of the new 8,000 square-foot Duvall Library was completed in August 2012. The \$7.2 million library was built across the street from the former library and adjacent to a historic church in the heart of historic downtown Duvall. A courtyard outside the main library entrance features native landscaping, salvaged woods and weathered steel that evoke the history of the town. An upper parking lot is easily accessible via stairs, or an elevator located in the courtyard. Patrons entering the library are greeted by a sculpture created from wood and resin by local artist John Grade. The library includes an expanded children's area, a Teen Zone, private study room and community meeting room.

In 2015, the Duvall Library was honored with a LEED Silver certification by the U.S. Green Building Council. The library was designed with many green features to save energy, reduce its environmental footprint and increase air quality. The library features energy-efficient interior lights and automatic daylight sensors that shut off lights. The interior lights, coupled with a ground-source heat pump, will reduce the building's electrical usage by 40 percent. The library also was built with recycled, salvaged and low Volatile Organic Compound (VOC) materials. A green roof reduces storm-water runoff, and helps keep the building cool in the summer. Six months after the library opened, circulation increased 56 percent and patron visits increased 33 percent when compared to the same six-month period at the former library.

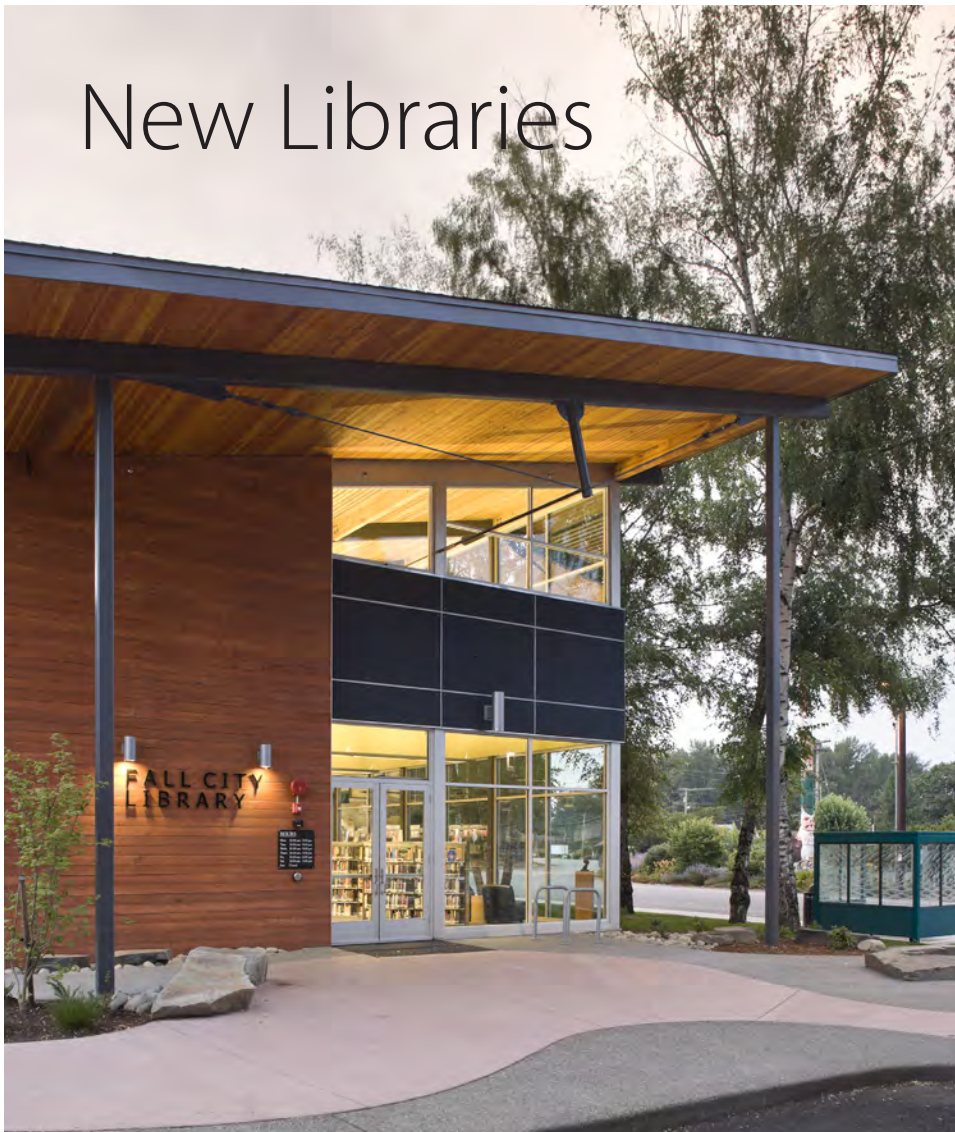
Address of New Library: 15508 Main Street NE

Architect: Johnston Architects

Contractor: Kassel Construction

"My daughters and I went to the new library and we love it! There are nice big open spaces."

New Libraries



Fall City Library

Construction of the new 5,000 square foot Fall City Library was completed in May 2008 at the existing library site. The new \$2.7 million library was constructed together with four other libraries using the design-build construction process. Large windows take advantage of natural lighting and allow for views of the Snoqualmie River. The library includes a Children's Area, Teen Zone and new community meeting room with a sliding door, which allows it to function as part of the larger library when not being used for community events or programs.

The landscaping materials and interior finishes were inspired by the nearby Snoqualmie River. The landscape evokes a river's edge by using curvilinear forms in the paving, native river edge plants and boulders. The interior design features cool colors such as blues and grays, shelving embedded with river grasses and curvilinear formed furniture. More than 3,000 new books, magazines, movies and CDs were added to the collection, for a total of 26,000 library materials. Six months after the library opened, circulation increased 58 percent and patron visits increased 30 percent when compared to the same six month period at the former library.

Address of New Library: 33415 SE 42nd Place

Architect: Miller-Hull Partnership

Contractor: BNBuilders

"The interior colors echo the river running through town."



Janet Zweig, *The Opposite of a Duck*. A two-sided LED light sculpture that displays unanswerable questions, Zweig's artwork was one of 40 projects selected for the Public Art Network's Year in Review.

New Libraries



Ran Hwang, *Everything Starts*, *Ode to Red Sunset* and *Ode to White Sunset*. The artist created the pieces using thousands of buttons.



Leo Saul Berk, *Actual Scale*. Tree sculptures line a pathway to the library.

Federal Way 320th Library

Construction of the new 15,000 square-foot Federal Way 320th Library was completed in September 2013 at the existing library site. The \$7.8 million library replaces a smaller 1960s building and the contemporary design features light-filled spacious interiors. An entry plaza welcomes visitors with benches, bike racks and a meandering pathway dotted with unique tree sculptures created by artist Leo Saul Berk.

The light-filled library interior features an expanded Children's Area, Teen Zone, three study rooms and a quiet study room. A community meeting room, when not in use, opens up to the central area with sliding glass doors. The library also includes expanded collections and access to a growing number of eBooks. The building was designed with the following green features: Windows that maximize daylight, radiant heating under the floor that efficiently heats and cools the building, low-flow fixtures and a detention pond and rain garden that provide on-site storm water treatment. Weathering steel was selected for the building cladding as a material well-suited to the rainy climate. The material will patina and oxidize over time, changing the current look. As it ages, the orange and brown finish will blend with the surrounding landscape. Six months after the library opened, circulation increased 7 percent and patron registrations increased 48 percent when compared to the same six month period at the former library.

Address of New Library: 848 S 320th Street

Architect: SRG Partnership

Contractor: Pease Construction

"The building is so light-filled and open!"

New Libraries



Greenbridge Library

Construction of the 2,300 square foot Greenbridge Library was completed in November 2008. The new \$425,650 library is located in leased space at the 10,000 square-foot YWCA Learning Center and includes a small collection of materials and computers.

The new library specializes in services to children and has a total collection of more than 11,000 materials, including items in Spanish and Vietnamese. The facility offers public computers, a Kid's Cyber (computer) Bar as well as study tables, lounge seating and wireless coverage throughout the building. Recycled materials and fixtures were incorporated into the design, which qualifies it as a "Built Green" project.

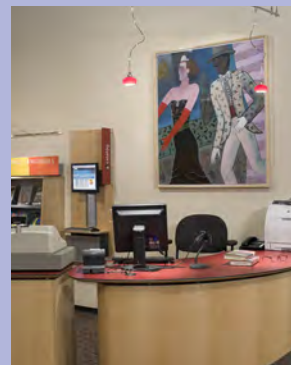
Within the first six months of being open, 299 people registered for library cards.

New Library Location: 9720 Eighth Avenue SW, Seattle

Architect: SMR Architects

Contractor: Walsh Construction

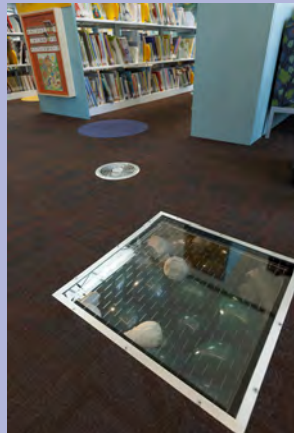
"Learning is free at libraries, which are democracy at its best," said former King County Executive Ron Sims during the opening ceremony.



Faye Jones, untitled painting.



New Libraries



Claude Zervas, *Enceladus*.
Inspired by artifacts recovered from an ancient shipwreck, the art is located below the floor in three areas of the library.

Kenmore Library

The 10,000 square-foot Kenmore Library was completed in July 2011. The \$7.8 million library is more than four times larger than the previous building. Designed around the concept of transparency, the library encourages community gathering and an inviting reading room is located in the central interior space. The library interior features a Children's Area, Teen Zone, meeting room and two study rooms.

Many sustainable features are included in the design: The orientation of the building and skylights maximize natural lighting throughout the building and as a result, the lighting fixtures in the reading room are turned off for up to 70 percent of the library's annual operating hours; a raised floor with under-floor air distribution efficiently heats, cools and ventilates the interior; carpet and paint contain low levels of Volatile Organic Compounds (VOCs); interior wood was sustainably harvested and certified by the Forest Stewardship Council; exterior teak wood siding was reclaimed from demolished buildings; and a rain garden helps reduce pollution, flooding and provides habitat for wildlife outside the library.

The site design includes a public plaza to the north of the building, connecting the library to the downtown core. More than 16,000 new books, magazines, movies and CDs were added to the collection. Six months after the library opened, circulation increased 118 percent and patron visits increased 91 percent when compared to the same six-month period at the former library.

New Library Location: 6531 NE 181st Street

Architect: Weinstein AU Architects

Contractor: Sierra Construction

"It's unquestionably a lot more prominent than the old library!"

New Libraries



Lake Hills Library

The 10,000 square foot Lake Hills Library was completed in September 2010. The \$2.8 million library is located in the redeveloped Lake Hills Shopping Center. A community stakeholder group created a redevelopment proposal in 2003, calling for a new library, retail and office space and residential units to be constructed in phases. The library design incorporates dynamic materials and textures to create a warm and inviting environment that encourages local residents to gather. A natural color palette is accented by vibrant furniture and fabrics that inject energy and interest into the space.

The Children's Area, Teen Area and community meeting room encourage lively interaction while study areas accommodate the need for quiet discovery. Custom Douglas Fir bookcases showcase the collection and enable casual browsing and exploration. The high-angled ceiling features exposed wood beams and much of the library is flooded with natural light. Green features are incorporated throughout, including energy-efficient lighting and sustainable interior finish materials. Six months after the library opened, circulation increased 21 percent and patron visits increased 10 percent when compared to the same six-month period at the former library.

New Library Location: 15590 Lake Hills Boulevard, Bellevue

Architects: Baylis Architects designed the shell of the new library building and ZGF Architects completed the space planning and interior work.

"This is what all libraries should look like!"



Lead Pencil Studios, Ramps.



Gaylen Hansen, Full Moon.

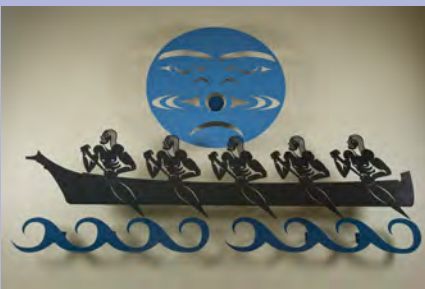


Gaylen Hansen, Rider with Umbrella.

New Libraries



Al Charles Jr., *Salish Eagle*.



James Madison, *Canoe Paddlers*.

Muckleshoot Library

The 6,000 square-foot Muckleshoot Library was completed in June 2008. The \$4.2 million library was constructed together with four other libraries using the design-build construction process. The library was designed with input from community members and features a reading area with expansive windows that take advantage of natural lighting. The new facility also includes Children's and Teen areas as well as a community meeting room with a sliding door, allowing it to function as part of the larger library when not being used for programs.

Two art pieces, created by Tribal members, are displayed inside the building: A carved paddle and a metal canoe scene. Concrete block walls on the exterior of the building feature a basket weave pattern and the landscaping includes native plantings that have historical significance to the Tribe. More than 4,500 new books, magazines, movies and CDs were added to the collection, for a total of more than 21,000 library materials. Six months after the library opened, circulation increased 459 percent and patron visits increased 65 percent when compared to the same six-month period at the former library.

New Library Location: 39917 Auburn Enumclaw Road SE, Auburn

Architect: Miller-Hull Partnership

Contractor: BNBuilders, Inc.

"This is a wonderful day that we have all been looking forward to in the Muckleshoot Community," said Joseph Martin, Assistant Tribal Operations Manager of Education, when the new library opened. "I am proud of KCLS and the Muckleshoot Tribe for planning this library."

New Libraries



Newcastle Library

The 11,000 square-foot Newcastle Library, the first library in the community, was completed in December 2012. The \$12.3 million library is reflective of Newcastle's forward-thinking community and is complimentary of its past. Architects designed the building around the concept of "a community celebration of knowledge." An outdoor plaza greets people as they arrive at the library, offering welcoming places to sit and read or gather with friends. Stepping inside the library, people enter a light-filled Reading Room with windows spanning three sides of the building. The Reading Room is a multi-functional space and includes the Teen Area, computers and collection of books, music, movies and magazines. A special feature within the Reading Room is a light filtering pattern on the glass that resembles a human brainwave when gaining knowledge. Other designated areas within the library include a community meeting room, private study rooms and a dedicated Children's Area with a bay window that glows orange when the western sun shines.

The building includes several sustainable features: A geothermal well-heating and cooling system that conserves energy; radiant heated floors that distribute heat from the ground up; low-flow fixtures that conserve water; and a green sedum roof that reduces storm water runoff. Brick detailing reflects the history of Newcastle's brick production and was sourced locally. Fused glass artwork, suspended from the ceiling, was created by artist Anna Skibska.

New Library Location: 12901 Newcastle Way

Architect: Mithun Architects

Contractor: Synergy Construction

"I love all the light."



Anna Skibska, EEG.

New Libraries



Susan Dory, *Boon*.



Tim Prentice, *Almost Square*.

Sammamish Library

The 19,500 square-foot Sammamish Library was completed in January 2010. To accommodate the growing community, the \$13.6 million library was built on a larger site as part of a new development adjacent to Sammamish City Hall, called Sammamish Commons. The expanded library features a community meeting room, two conference rooms and a Children's Area and Teen Zone.

The Children's Area overlooks the new eastern lawn which includes a reflexology path, native plantings and a grove of Birch Trees. A large reading room, complete with a gas fireplace, allows views to the west of the nature preserve, Olympic Peninsula and Seattle skyline. Skylights reduce the need for artificial lighting and create a warm and inviting space.

Sustainable design practices were a priority and the new library includes a partial green roof and radiant heating. Parking is located under the building with an elevator to access the library. In addition to more computers and wireless access, there is a total collection of more than 106,000 library materials. Six months after the library opened, circulation increased 20 percent and patron visits increased 11 percent when compared to the same six-month period at the former library.

New Library Location: 228th Avenue and SE Eighth Street

Architect: Perkins + Will

Contractor: Sierra Construction

"I visited the new facility and it is wonderful!"

New Libraries



Snoqualmie Library

The 6,000 square-foot Snoqualmie Library was the first library to be built as part of the \$172 million Capital Bond. Construction of the \$3.8 million library began in 2005 and the project was completed in August 2007. The new library was constructed together with four other libraries using the design-build construction process.

Large windows throughout the new building take advantage of natural lighting and allow for views of the surrounding mountains and neighborhood center. The library interior features a large community room that may be separated from the rest of the library by an overhead glass door. The new library includes more books, materials, computers, and space for children and teens. Six months after the library opened, circulation increased 171 percent and patron visits increased 54 percent when compared to the same six-month period at the former library.

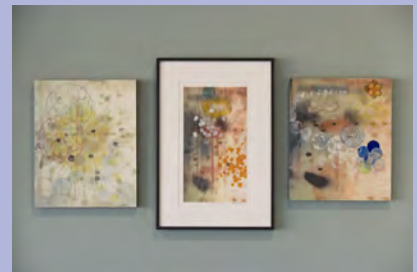
An interactive piece of art, called *Liquid Letters*, was designed by Trimpin. Using a dial with letters of the alphabet, children and adults may program different words to be spelled out. The letters, made out of water, descend from above one at a time to spell out the words. When people are not interacting with the piece, a computer program prompts various words to be spelled out every five minutes.

New Library Location: 7824 Center Boulevard SE

Architect: Miller-Hull Partnership

Contractor: BNBuilders, Inc.

"Beautiful views! I will use this library more often."



Barbara Robertson, *Array, Scroll-Orange and Bubble.*



Trimpin, *Liquid Letters.*

Outreach Vehicles



Library2Go!

Can't get to the library? The library can come to you. The 2004 Capital Bond made it possible for KCLS to expand its innovative spin on bricks and mortar with "libraries on wheels." From 2010-2013, KCLS more than doubled the size of its outreach vehicle fleet, adding five Sprinter vans and four mobile computer labs for a total of 17 outreach vehicles.

The growth of the number and type of vehicles has in turn increased the number of patrons served and the variety of services provided. In the past five years, an estimated 89,431 King County residents have received some kind of mobile outreach service with these nine new vehicles, whether educational, entertaining programs, professional development or other offerings. In the past five years, a total of 313,183 patrons of all ages and interests were served using all 17 KCLS outreach vehicles.

Library2Go! vehicles bring books, music, movies and other resources to childcare centers, low-income housing facilities, senior centers, summer learning sites, various festivals and events, and other venues in KCLS' service area. In recent years, mobile outreach has expanded its ABC Express service, more than tripling the number of child cares reached. The ABC Express service visits larger child-care facilities, and with the expansion of the fleet, the smaller vehicles visit home-based child-care sites. The new vehicles allowed KCLS to increase mobile service to children and families by over 40 percent.

Four new computer lab trucks, called Mobile Learning Labs, have expanded opportunities to engage patrons, offering open lab time and use of KCLS' electronic collection. Mobile Learning Lab vehicles are equipped with seven patron computer stations, a printer, and a wall monitor for demonstrations and teaching. They have ADA software such as text/screen enlargement, as well as wheelchair lifts. They are powered by ultra-low sulfur diesel, and use rooftop solar panels that recharge the vehicle's batteries. The Mobile Learning Labs are an expansion of the popular Techlab service.

"Wow, that is so cool! I've used the library my whole life and I think it's great that you're getting out to the communities that need you!"

Expanded Libraries



Auburn Library

The renovation and 5,000 square-foot expansion of the Auburn Library was completed in September 2012, bringing the library to a total of 20,000 square feet. The \$5.7 million project expanded two sides of the original building and glass walls allow views of neighboring Les Gove Park. Additional features include a central reading area that encourages gathering, a modified entryway, four small study rooms, a quiet study room and a flexible meeting room. The project also includes structural and electrical improvements and a rain garden. There are 29 additional parking stalls located just west of the library, bordering Auburn Way. The library includes more materials, computers, wireless access and space for children and teens. Six months after the library opened, patron visits increased 23 percent when compared to the same six-month period prior to the expansion and renovation project.

Library Location: 1102 Auburn Way S

Architect: Schacht|Aslani Architects

Contractor: M.J. Takisaki

"In a down economy, it's so nice to have something fresh and new for all of us to use. This is a really beautiful building!"



Paul Vexler, *Helix with Internal Element*.



Paul Vexler, *Amoeba Like*.

Expanded Libraries



Bellevue Library Parking Garage

A new three-level parking garage at Bellevue Library was completed in June 2013. The \$11.1 million project added 163 new parking spaces, for a total of 362 spaces. While accommodating practical needs of library users, the garage was designed with aesthetic appeal. The upper open-air level of the garage is rimmed with a trellis and the exterior of the garage features a green wall of living plants. Other site enhancements include new artwork, landscaping, a pedestrian walkway and underground utilities. Artwork by renowned Northwest artist Buster Simpson is displayed on an 18' tall stainless steel mesh wall at the primary entrance. A facade of stamped aluminum automobile license plates is attached on both sides of the mesh wall. On the exterior wall, black and white seven letter words are stamped on black and white license plates. On the interior wall, a selection of multi-colored license plates are stamped with "vanity" words found in the public domain.



Buster Simpson, Vernacular.

Library Location: 1111 110th Avenue NE

Architect: Johnston Architects

Contractor: Serpanok Construction

"The new parking garage is wonderful. It's nice to know that I will always be able to find parking here, even on a busy Sunday."

Expanded Libraries



Covington Library

The expansion and renovation of the Covington Library was completed in March 2008. The \$7 million project increased the size of the existing library by 7,700 square feet to a total of 23,000 square feet. The library includes a spacious "great room" area with a gas fireplace, canopy-style theatre lights, moveable lounge seating with study tables and a Food for Thought Café. The library has a new Children's Area with a multi-use storytelling room and a Kid's Cyber (computer) Bar. The expanded Teen Zone features lounge seating, study tables and a laptop Cyber Bar with wireless coverage throughout the library. There are two community meeting rooms and one for quiet study as well as additional catalog stations to search for or place holds on materials. Six months after the library opened, circulation increased 19 percent and patron visits increased 95 percent when compared to the same six month period prior to the expansion and renovation project.

Library Location: 27100 164th Avenue SE

Architect: Integrus Architects

Contractor: Graham Construction

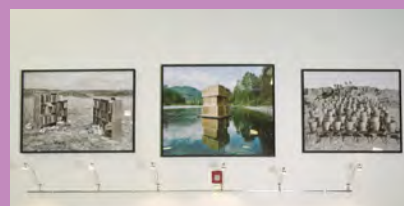
"Covington Library is amazing now. It's attractive, appealing and aesthetically pleasing. Bravo!"



Cappy Thompson, *We Are Sailing in the Sea of Possibilities Toward Our Next Bright New Beginning.*



Mark Meyer, #456 *Abstruse Figments, Global Tactics, Exergonic and Cat/dog.*



Chris Engman, *The Library, Abandon Crates and The Audience.*

Expanded Libraries



Fairwood Library

The relationship between the King County Library System and the Fairwood community goes back 51 years. So when the newly expanded Fairwood Library opened in December 2014, more than 500 people turned out to celebrate. The Fairwood Library's \$8 million redesign and expansion added 5,000 square feet for a total of 20,000 square feet. The striking building was designed to create an open and airy feeling for patrons, offering natural light from its high southwest-facing windows, as well as opening up a view of its woody surroundings. The expanded library includes comprehensive interior and infrastructure renovations, as well as more computers and materials, a community room, quiet study areas, a space for teens, and a space for children with a new child-accessible book shelving system. An Automated Materials Handling System helps staff keep up with patron demands at the busy library.

The Fairwood Library also was designed and built to be eco-friendly. Its interior materials meet LEED requirements for low or no off-gassing, and for recycled content. The heat-recovery system will help save energy. The design of the building's addition utilized large roof overhangs to help shade the glass walls, reducing solar heat gain and the demand for cooling in the summer. Yet by allowing in more sunlight, the building design also reduces the demand for heating during the winter months.

Library Location: 17009 140th Avenue SE, Renton

Architect: Schact/Aslani Architects

Contractor: Beisley Inc. Construction

"It is obvious that much work and thought went into the expanded library. There is also plenty of parking. Bravo!"



Byron Birdsall's painting of Mount Rainier, *Sentinel*, has remained in the library's art collection.

Expanded Libraries



Federal Way Library

The expansion and renovation of Federal Way Library was completed in June 2010. The \$7.8 million project increased the library by 9,500 square feet to a total of 34,500 square feet, making it the second largest library in the System. The additional 9,500 square feet of space opens the building to the outdoors and enhances the functionality of the space inside. Building upon the library's rich natural setting in a stand of mature Evergreen Trees, architects employed a guiding concept of the library's addition as a "Lantern in the Forest." A series of new skylights were added, as well as movable glass panels inside, enabling patrons to better see one another and view the site's wealth of trees, native plants and rain gardens outside.

Library staff describe the expanded building as "simply inviting." New furniture and new finishes are found throughout the building, which includes a new Children's Area, large meeting room, a conference room, two quiet study rooms and three group study rooms. Visible from the library windows, the rain gardens were designed to playfully show the journey of water from roof to natural infiltration, rather than conceal it in buried pipes. The library includes more computers, space for children and teens and community meeting space. There are more than 19,000 new books, magazines, movies and CDs for a total collection of more than 200,000 library materials. Six months after the library opened, patron visits increased 25 percent when compared to the same six-month period at the former library.

Library Location: 34200 1st Way S

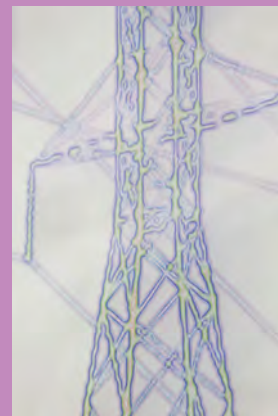
Architect: Mithun Architects

Contractor: Kirtley-Cole

"I died and went to heaven!" said a young adult who walked into the newly renovated library for the first time.



Leo Saul Berk, Reserves.



Leo Saul Berk, New Stand.

Expanded Libraries



Benjamin Moore and Louis Mueller, *Celebrating Knowledge*.



Katherine Hill, untitled mural.

Kirkland Library

The expansion and renovation of the Kirkland Library was completed in December 2009. The \$4.1 million project expanded the library by 4,500 square feet, bringing it to a total of 19,500 square feet. The additional square footage extends the roof from the original building and culminates in a glass pavilion overlooking the city's Peter Kirk Park. The building design invites the community into the library from its prominent location in the city's civic cultural district, adjacent to the pool, the performing arts center and the park. The library expansion created an expanded Children's Area that features a custom mural by artist Katherine Hill.

New furniture and new finishes are found throughout the building. Other highlights include two light-filled reading and study areas, a new conference room, a large meeting room and two study rooms. The signature element of the expanded and renovated library is an airy, light-filled quiet room overlooking Peter Kirk Park, which features a commissioned work of glass art by artist Benjamin Moore and Louis Mueller. There are more than 5,000 new books, magazines, movies and CDs for a total collection of more than 116,000 library materials. Six months after the library opened, circulation increased 7 percent compared to the same six-month period prior to the expansion and renovation project.

Library Location: 308 Kirkland Avenue

Architect: Ruffcorn Mott Hinthorne Stine

Contractor: Kirtley Cole

"Your library is the best I've ever seen. It's very up-to-date with today's standards. It's well-kept and a comfortable place to come to."

Expanded Libraries



Lake Forest Park Library

The expansion and renovation of the Lake Forest Park Library was completed in January 2012. The \$1.4 million project increased the library by 2,299 square feet to a total of 5,873 square feet, which is 60 percent larger than the original library. The interior of the library has a dedicated Children's Area and Teen Zone, more computers and a multipurpose room that may be sectioned off from the main library for small group meetings via a sliding glass wall. Other enhancements include additional seating and study areas, new furniture and a public computer Cyber Bar. The library features expanded collections, including access to a growing collection of eBooks.

To adhere to green building standards, building materials were selected that contained a high level of recycled content (the aluminum used in the storefront is 100 percent recycled and the ceiling tiles contain 82 percent recycled content). There was also a focus on energy efficient lighting and the HVAC system is equipped with occupancy sensors for efficient energy use. The interior adhesives, sealants and sealers contain a low Volatile Organic Compounds (VOCs) emission level and the furniture is Greenguard certified for being low-VOC compliant. The wood used in the project is certified as a rapidly renewable resource (planted and harvested in less than a 10-year cycle) and when possible, materials were selected that were manufactured within 500 miles of the project site. Six months after the library opened, patron visits increased 16 percent when compared to the same six month period at the former library.

Library Location: 17171 Bothell Way NE

Architect: Hutteball & Oremus

Contractor: CDK Construction Services

"The new library is so light, bright and cheerful. It feels spacious and open."





Unknown artist, glass sculpture restored and re-imaged into a mobile assembly above the Children's Area.

Library Connection @ Southcenter

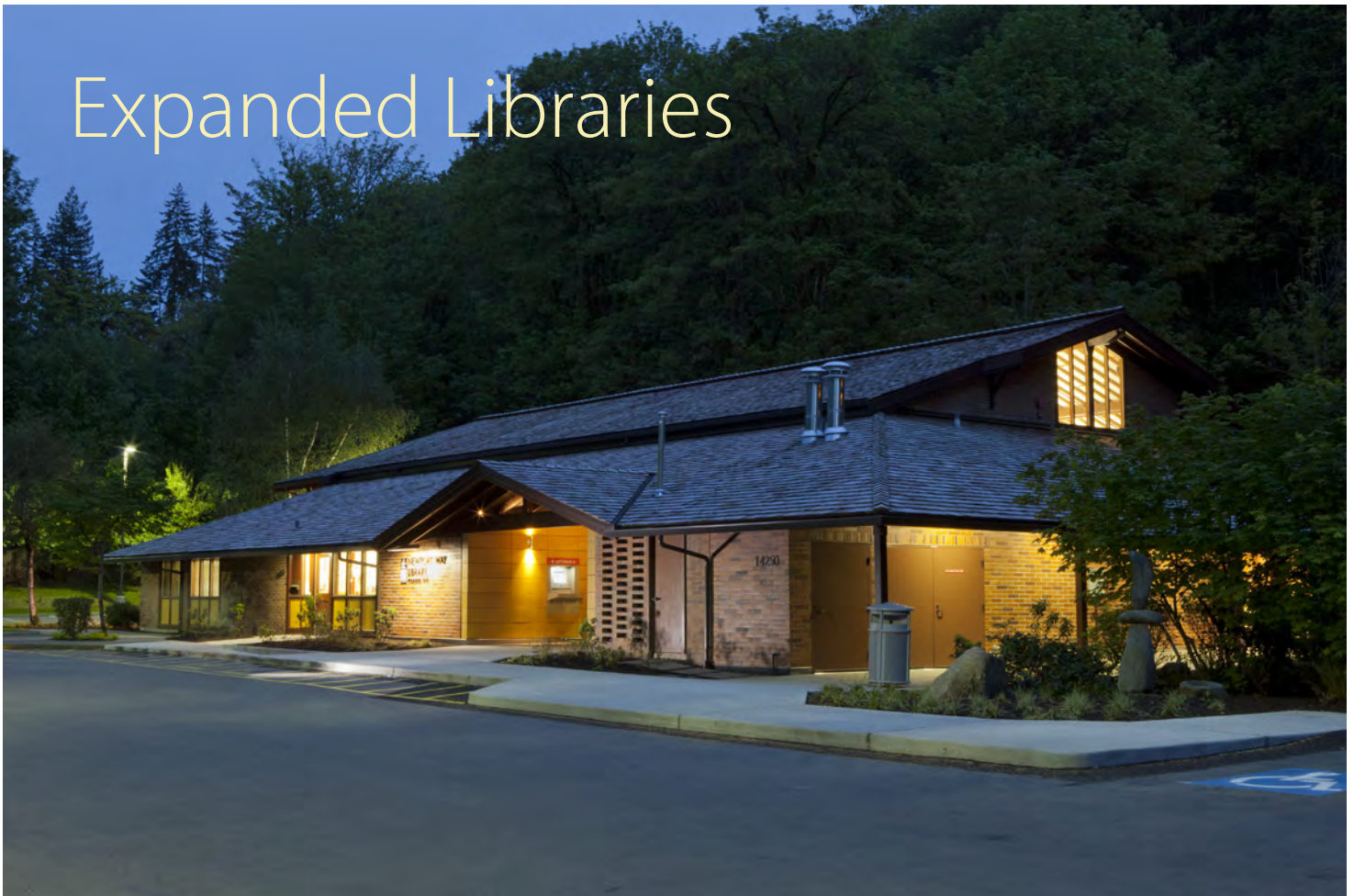
The expansion and renovation of the Library Connection @ Southcenter was completed in January 2012. The \$313,000 project entailed improvements to the exterior storefront and expanded the library by 164 square feet, bringing it to a total of 3,322 square feet. The library received new furniture, carpet and paint and Cyber (computer) Bars were expanded by 25 percent to provide even more space for laptop users. Sustainable features were a focus, from PVC-free Platinum LEED certified carpet to energy efficient lighting. Expanded and transparent storefronts provide natural ambient light. Shelving was not replaced, but upgraded with simple modifications and additional lighting. Green principles also were utilized in the artwork displayed above the Children's Area. A decommissioned glass sculpture was restored and re-imaged into a suspended mobile assembly. Six months after the library opened, circulation increased 4 percent and patron visits increased 3 percent when compared to the same six-month period prior to the expansion and renovation project.

Library Location: 1386 Southcenter Mall, Tukwila

Architect: SHKS Architects

Contractor: JB Construction

Expanded Libraries



Newport Way Library

The expansion and renovation of the Newport Way Library was completed in April 2011. The \$3.4 million project added more space to the meeting room and reading area, increasing the size of the library to a total of 8,690 square feet. Noticeable from the exterior, the renovation work included a relocated entrance that is closer to the parking area. The interior of the library features enhanced public spaces with additional seating, including a new windowed reading porch and a cushioned children's window seat with views of the surrounding wooded area. The enlarged meeting room opens up to the central area when not in use with a large sliding glass door featuring artwork by glass artists Stuart Keeler and Michael Machnic.

The Children's Area was enhanced with computers and child-friendly furniture. An automated materials handling system, which allows people to return items via Self Check-In stations outside the building, helps return items to shelves more quickly. Updated carpeting, shelving, new furniture and renovated restrooms complete the public area enhancements. Sustainable practices included adding a well-insulated cedar shake roof and new insulated walls as well as double-paned windows and energy efficient light fixtures. Carpet and paint with low levels of Volatile Organic Compounds (VOCs) were used, which improve the quality of air inside the library. The computer Cyber Bar and Self Check-In counters were built from reclaimed hardwood from fallen urban trees in Seattle. The facility features more than 6,000 new books, magazines, movies and CDs.

Library Location: 14250 SE Newport Way

Architect: Miller-Hull Partnership

Contractor: Kirtley-Cole

"I love the reading porch. It's a nice place to relax and read and it's comfortable and quiet!"



Stuart Keeler and Michael Machnic, *Open Source*.

Expanded Libraries



Deborah Mersky, *The Sea Beside Us*.

Shoreline Library Parking

A 14,000 square-foot expansion of the Shoreline Library parking lot was completed in October 2007. The \$2.3 million project expanded the surface parking to the west of the existing library after three residential properties were acquired and demolished. With 36 new parking spaces, there are now a total of 118 parking stalls in both the new and existing lots.

Other site enhancements include improved pedestrian circulation, reconfiguration of the existing parking lot to accommodate SUV vehicles, a small outdoor gathering area for use by small groups or library patrons and decorative art panels installed on the retaining wall that borders 175th Street. The perimeter of the parking lot also is landscaped with native plants, and a second stairway connects the upper parking lot with the lower parking lot.

Library Location: 345 NE 175th Street

Architect: Hutteball & Oremus

Contractor: Pellco Construction, Inc.



Skykomish Library

A 200 square-foot expansion project was completed at the Skykomish Library in October 2006. The \$143,000 project increased the square footage of the library to a total of 1,042 square feet. This was the first library expansion project to be completed as part of the \$172 million library Capital Bond.

Library Location: 100 5th Street

Architect: Hutteball & Oremus

Contractor: RAFN Company

Expanded Libraries



Vashon Library

The expansion of the Vashon Library, to a total of 10,000 square feet, was completed in March 2014. Located in a forested public park just north of the downtown core on Vashon Island, the \$6.1 million project increased the size of the library by 4,000 square feet. The new addition slides underneath the existing building, preserving much of the original structure. The expanded and renovated library features two study rooms, a Reading Room and dedicated areas for Children and Teens. A larger community meeting room may be reserved for non-commercial purposes when not in use for library programs and is equipped with an automatic drop-down screen, large whiteboard and automated shades to dim the lighting for movies or slides.

The building was designed with several "green" features, including a green roof to reduce storm water runoff and help keep the building cool in the summer. To bring more light into the building, the roof above the Reading Room area is punctuated by three light monitors, which create an airy and open space to read and study. At night, the light monitors become beacons of light from the street, increasing the library's visibility in the community. The new library offers patrons a thoughtful place to read and interact, while connecting them gracefully to their surroundings with enhanced views of the surrounding park.

Library Location: 17210 Vashon Highway SW

Architect: Bohlin Cywinski Jackson

Contractor: Beisley Construction

*"I love the natural light in the building
and the views of the park!"*



David Eckard, *Cumulative Cumulus*. Five installments are suspended from the ceiling of the library.



Irene Otis, detail of *Bear Story* tiles in children's area.

Expanded Libraries



Katy Stone, *Willow's Undercurrent*.



Chris Jordan, *Paper Bags*.

Woodmont Library

The expansion of the Woodmont Library, to a total of 9,850 square feet, was completed in July 2008. The \$3.9 million project increased the size of the library by 4,600 square feet, which nearly doubled the size. The expanded portion of the library features large windows that open up the interior and take advantage of natural lighting. The library includes a Children's Area, Teen Zone and new community meeting room. The meeting room features a "disappearing corner," which is formed by two sections of folding glass door panels. This allows the meeting room to function as part of the larger facility when not used for meetings or programs.

One unique feature of the library is a Cyber Bar for laptop users, located where the corner of the existing building meets the new addition, which is marked by a portion of steel frame. The frame supports the existing roof where a brick wall was removed. The Cyber Bar counter was made with wood harvested from a Bigleaf Maple Tree. The new roof was designed to be a geometric lens shape and sweeps out over the older building to create a dramatic overhang at the new entrance, which helps to shade the new addition from the sun's glare. Virginia Creeper vines are planted against the concrete wall near the entrance and when grown will form a "green wall" to help keep the building cool. One of the new pieces of artwork, called *Paper Bags* by Chris Jordan, depicts 1.14 million brown paper supermarket bags, which is the number used every hour in the United States.

Six months after the library opened, circulation increased 27 percent and patron visits increased 14 percent when compared to the same six month period prior to the expansion and renovation project.

Library Location: 26809 Pacific Highway S, Des Moines

Architect: Miller Hayashi Architects

Contractor: Lease Crutcher Lewis Construction

Renovated Libraries

Algona-Pacific Library

Interior improvements to Algona-Pacific Library were completed in 2007. Enhancements included remodeling the interior, new carpet, paint, shelving and way-finding components to help guide patrons through the library. New exterior siding also was installed.

Library Location: 255 Ellingson Road, Pacific

Architect: Buffalo Design, Inc.

Contractor: Tatley-Grund Inc.

Bothell Library

Construction to install a sliding glass door in the library's meeting room was completed in January, 2015. The enhancement provides more open access for patrons when not in use for programs or reserved for non-commercial purposes. The welcome new feature was made possible by a generous bequest from the estate of long-time Bothell resident and avid library user Rosemary Theresa Wood, and was named in her honor. Wood, a KCLS Literary Legend, designated that \$186,608 go to her beloved Bothell Library, where she spent many hours researching genealogy, gardening, art and other passions. Other KCLS funds added an Automated Materials Handling System.

Library Location: 18215 98th Avenue NE

Architect: SHKS Architects

Contractor: Stetz Construction

Library Connection @ Crossroads

Interior improvements to the Library Connection @ Crossroads were completed in January 2014. Enhancements include new carpet, furniture, computers, and the installation of an Automated Materials Handling and Self Check-In system for library materials. The project also included expanded public seating and improved access to library materials.

Library Location: 15600 NE 8th Street, Bellevue

Architect: SHKS Architects

Contractor: Stetz Construction



Algona-Pacific Library



Bothell Library



Library Connection @ Crossroads

Renovated Libraries



Des Moines Library

Des Moines Library

Upkeep and maintenance work at Des Moines Library was completed in January 2008. The project included repair work to the library exterior, as well as remodeling and upkeep of the interior. Due to the condition of the building, metal roofing panels, windows, exterior masonry and exterior stucco were replaced. The exterior of the building also was enhanced by a new, more protective entry canopy and metal panel siding.

Library Location: 21620 11th Avenue S

Architect: Hutteball & Oremus

Contractor: Allen-Bradbury Construction



Issaquah Library

Issaquah Library

Interior improvements to Issaquah Library were completed in December 2009. Enhancements included new carpet, paint, furniture and reconfiguration of the meeting room. An Automated Materials Handling System also was installed in the backroom to reduce the amount of time it takes to return library materials to shelves.

Library Location: 10 W Sunset Way

Contractor: RAFN Company



Kent Library

Kent Library

Interior improvements to Kent Library were completed in March 2010. The project entailed relocating the meeting rooms, restrooms and front entrance. An Automated Materials Handling System was also installed in the backroom to reduce the amount of time it takes to return library materials to shelves.

Library Location: 212 2nd Avenue N

Architect: Miller Hayashi Architects

Contractor: Landon Construction Group, LLC

"I just want to say that the Kent Library looks very nice and spacious after the remodel."



Maple Valley Library

Maple Valley Library

Interior improvements to Maple Valley Library were completed in April 2013. The project included relocating the public computer stations, new carpet, lighting and furniture.

Library Location: 21844 SE 248th Street

Architect: Robin Chell Design

Contractor: Allen Bradbury Construction

Renovated Libraries

North Bend Library

Interior improvements to the North Bend Library were completed in 2008. Enhancements included new carpet, paint, furniture and way-finding components to help guide patrons through the library.

Library Location: 115 E 4th Street

Contractor: RAFN Construction



North Bend Library

Redmond Library

Interior improvements to Redmond Library were completed in January 2009. Enhancements included new paint and carpet, installation of the complete way-finding signage package, expanded teen and World Language areas, new circulation desks, new furniture and reconfiguration of the public computer area and the Self Check-Out stations. A shelter was installed outside the library at the Self Check-In stations, to protect patrons from the weather. Although the Capital Improvement Plan called for expanded parking at the library, the parking was already expanded when the city hall moved next door and a joint parking lot was coordinated. KCLS is prepared for further parking expansion if necessary.

Library Location: 15990 NE 85th Street

Architect: Donald King and Associates

Contractor: Regency NW



Redmond Library

Richmond Beach Library

Interior improvements to Richmond Beach Library were completed in January 2014. Enhancements include new furniture, lighting, carpet, paint and computer workstations.

Library Location: 19601 21st Avenue NW

Contractor: Allen Bradbury Construction



Richmond Beach Library

Woodinville Library

Interior improvements to the Woodinville Library were completed in 2008. Enhancements included new carpet, paint, furniture and way-finding components to help guide patrons through the library.

Library Location: 17105 Avondale Road NE

Architect: Hutteball & Oremus

Contractor: RAFN Company



Woodinville Library

In Progress

East Hill of Kent Library

The Capital Improvement Plan calls for a new 6,000-square foot library (tenant improvement) at a highly visible and accessible site. The new library will also have more materials, computers, wireless access and space for children and teens.

Estimated Start of Project: To be determined.
Project is on hold until a lease is secured.



Kingsgate Library Rendering

Kingsgate Library

The Kingsgate Library is undergoing a major renovation. Interior space has been redesigned, offering many improvements. When re-opened, the library will have a flexible meeting space with a sliding glass wall that will open the space to library patrons when not in use for a meeting. Two small study rooms are being added for use by individuals or small group. The renovation includes a redesigned wood-clad ceiling with skylights and improved acoustics, and the lobby has also been redesigned to be more welcoming. Other improvements include new shelving, carpeting, paint, lighting, furniture, and public-restroom upgrades. Yet along with these new features, the library's historic mural will remain..

Construction Start Date: March 2015
Architect: Sundberg Kennedy
Ly-Au Young Architects



Mercer Island Library

Mercer Island Library

The planning and design process for interior library improvements is underway. The project includes minor upgrades and reconfigurations to the interior, as well as a new quiet study area.

Library Location: 21844 SE 248th Street
Expected Construction Start
Date: Late 2015/Early 2016
Architect: Miller-Hull Partnership



Skyway Library Rendering

Skyway Library

Construction on the new 8,000-square foot library started in July 2014. The new library includes large windows for natural lighting, more books and other materials, plus more computers, space for children and teens and a community meeting room.

Expected Completion Date: Late 2015
Address: Renton Avenue S and 76th Avenue SE
Architect: Weinstein A/U
Contractor: Beisley Construction

In Progress

Tukwila Library

Construction of a new Tukwila Library began in August 2015. Thanks to the support of the KCLS Foundation, the library will be expanded by 2,000 square feet to a total 10,000 square feet. The original plan called for an 8,000 square-foot building. The library is situated within the new Tukwila Village mixed-use development, which is located on Tukwila International Boulevard. The Tukwila City Council selected a developer for the majority of the site. KCLS, which purchased land for the library, worked with the developer on site design.

Expected Completion Date: Late 2016

Architect: Perkins + Will

Contractor: Edifice Construction



Tukwila Library rendering

Valley View Library

The library is in the design phase. The Capital Improvement Plan calls for upkeep and maintenance of the library during the next decade, more books and more materials.

Estimated Start of Project: 2016



White Center Library rendering

White Center Library

Crews broke ground on the new, 10,000 square-foot White Center Library in March 2015. The library will have more materials, computers, wireless access and spaces for children and teens. The new library will have a south-facing, 18-foot high glass wall that to bring in natural light, and an elongated rooftop skylight that will allow patrons to "read books by daylight."

Expected Completion Date: Spring 2016

Address: SW 107th Street and 14th Avenue

Architect: NBBJ

Contractor: CDK Construction



White Center Library construction

Future Project



Boulevard Park Library

Boulevard Park Library

The Capital Improvement Plan calls for upkeep and maintenance of the library during the next decade, as well as more books and materials.

Estimated Start of Project:

Late 2015/early 2016

To learn more and watch the progress, visit www.kcls.org/bond.

Connect with us



